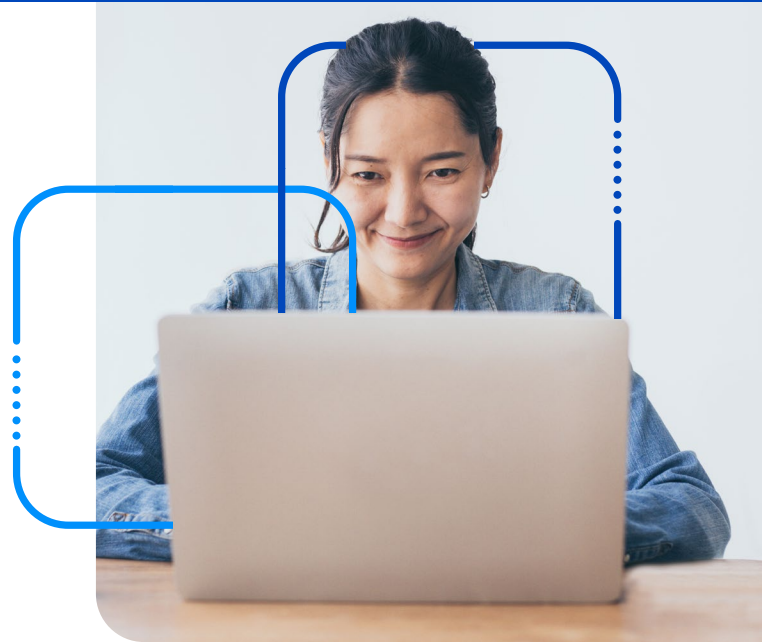


Integrated EDI for Sage 100



Managing the complexities of large transaction volumes, adapting to evolving integration requirements, and ensuring seamless ERP upgrades can present significant challenges for businesses. Imagine trying to process a surge in orders during a busy season, only to face delays because your systems can't keep up. Or dealing with the frustration of a critical integration lagging when a key trading partner changes their requirements. These pain points can disrupt operations and impact customer satisfaction. Cloud-based integrations for Sage 100 provide a solution that not only streamlines processes but also adapts to your business needs, enabling you to tackle these challenges and keep your business ahead of the curve.

COMPLETE SOLUTION FROM ONE SOURCE

Our unique modular approach enables us to offer a true end-to-end EDI solution that is easy to use and unparalleled in scalability. We've taken the complexity out of implementing EDI by providing all four of the components you need to successfully deploy EDI.

Connectivity with your trading partner(s) is required to transmit EDI documents, whether directly via the Internet or through a "Value Added Network," or VAN. The TrueCommerce Trading Network (VAN) is our Internet-based transaction gateway, across which your EDI transactions are transmitted, providing connectivity with all of your trading partners. It is compliant with virtually any connectivity protocol, including AS1/AS2/AS3, FTP and (if required) VAN interconnects.

Web-based EDI Translation Software, TrueCommerce Transaction Manager, is our user-friendly translation software that converts business documents from raw EDI data (ANSI ASC X12 and EDIFACT standard) into a human-readable business form. TrueCommerce Transaction Manager can be deployed as on-premise software or as a web-based (SaaS) deployment hosted by TrueCommerce.

Benefits:

- An unequalled range of commerce solutions for Sage 100, developed and supported by one trusted source— including integrated EDI, digital marketplace and storefront integrations, fulfillment automation and much more
- Advanced EDI integration automates a wide range of sales, purchasing and remote warehouse documents, including advance ship notices (ASNs)
- Connect directly with over 180,000 trading partners on the TrueCommerce global trading network, with time-saving EDI mapping updates at no extra charge
- Unlimited, in-region support and free software updates

Data Mapping and Integration provide the ability to seamlessly send and receive information between Transaction Manager and Sage 100 through the TrueCommerce Business System Plug-In™.

This is achieved by processing EDI transactions through a collection of intelligent software modules. These modules are programmed to format your inbound EDI transactions to match against your configurations within Sage 100 as well as match your outbound transactions against your trading partner’s requirements. As your business grows and you acquire new customers, additional trading partner maps can easily be added and seamlessly integrated with your TrueCommerce solution.

Pre-Built ERP Integration connects your Sage 100 system to a vast network of trading partners. This integration automates key document exchanges, including O2C and P2P transactions, as well as automates your communications with your 3PL. Our modern, user-friendly interface makes it easy to ensure smooth, efficient operations and data accuracy,

Support is a critical component of a complete, end-to-end EDI solution. Our Professional Services team has the broad range of expertise to handle not only all of your trading partners’ requirements, but also any technical issues related to business system integration and the sending and receiving of your EDI documents. You can also count on the support team to provide the advice and guidance you’ll need to be successful. Even if you aren’t familiar or comfortable with EDI, we’ll be there to help you get up and running, step by step.

TrueCommerce makes EDI painless by providing businesses with complete, end-to-end solutions that are easy to use, robust and affordable – along with market-leading support and services to ensure your success.

How EDI Works

With EDI, you can automate the many steps involved in order processing, from the initial purchase order, to ASNs and shipping updates, to invoices, and more. **Here's how.**

Your Business



Business documents (i.e. purchase order, inventory, freight details, etc.) automatically send from an internal system.



EDI solutions transform outgoing messages to meet recipient requirements for business compliance.



EDI documents are transferred securely via the TrueCommerce Global Commerce Network.



Your Trading Partner



Internal systems process and store incoming documents, and may create/send new documents in response.

INTEGRATE YOUR ENTIRE SUPPLY CHAIN WITH SAGE 100

Choosing an end-to-end EDI solution that offers seamless integration with your Sage 100 system is a strategic investment that can improve customer relationships, business agility and profitability. But that's just the beginning of what TrueCommerce integrations offer our customers!

Integrating your TrueCommerce EDI solution with Sage 100 reduces the need to print or re-enter transactions, which makes order processing faster and more efficient without sacrificing accuracy. TrueCommerce Transaction Manager™ offers powerful order-to-cash, remote warehouse and procure-to-pay integration that's proven, affordable and easy to use – enabling you to meet all of your customers' EDI requirements.

Web-based EDI

The choice of a web-based, integrated EDI solution hosted by TrueCommerce offers Sage 100 users the advantage of anytime/anywhere access, with no maintenance, backup or update responsibilities.

Streamline Order Fulfillment

TrueCommerce Transaction Manager integrates EDI with your Sage 100 sales order module, including sales orders, invoices, shipments and advance ship notice (ASN) documents.

Leveraging Sage 100's built-in ASN support, the TrueCommerce solution supports the full range of ASN configurations, including the ability to create multiple shipments at once and to package shipments automatically based on predefined rules. You can also print GS1-128 labels and have existing sales orders updated automatically.

Companies that need remote warehouse integration can automate communication with third-party logistics (3PL) providers to fulfill orders faster and more accurately than ever before. For example, inbound EDI shipment documents automatically create shipments within Sage 100, including the package details. You can update lot numbers and serial numbers from inbound shipments, or create outbound ASNs from inbound shipments – all automatically.



Advanced Purchasing Integration

For businesses that want to connect with their suppliers using EDI, TrueCommerce Transaction Manager offers comprehensive integration with the Sage 100 purchase order module, including purchase order, receipt of goods and receipt of invoice transactions.

Inbound advance ship notices (ASNs) are automatically imported into Sage 100 to receive against the original purchase order – saving you time and reducing manual effort. In addition, multiple shipments can be created against a single purchase order and EDI shipments and invoices can be assigned into batches.

Built-in Process Controls

TrueCommerce Transaction Manager ensures that required data, requested by your customer, has been entered correctly and will notify you of invalid fields prior to sending your transactions. The TrueCommerce solution maintains the integrity of your system by automatically validating unit pricing, duplicate purchase order numbers and items before sending transactions to Sage 100. These automated safeguards help to eliminate chargebacks from customers and reduce the turnaround time on orders by ensuring that all EDI documents sent to your customers are complete and accurate.



I used to spend eight hours a day entering EDI documents, but once we started using the TrueCommerce EDI Platform, it took me ten minutes and I was able to expand my support of the company into other business-critical areas, including shipping and invoicing. We were able to reassign workloads within our company to increase overall productivity.”

Robin Huber

CIPA USA, Inc.
EDI Coordinator



Automate Everyday Tasks

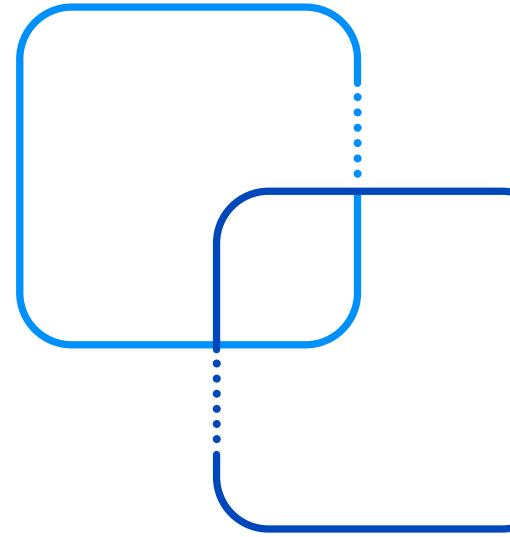
The TrueCommerce Scheduler™ add-on further enhances this easy-to-use, integrated EDI solution by automatically performing send and receive functions for the integrated transactions that you specify. Scheduling automated transactions at a time that best fits your business needs saves you time and reduces manual effort, so you can focus on other important business functions.

EDI is Just the Beginning

Sage 100 users need to move more data faster across more channels, maximize automation and eliminate manual effort. TrueCommerce offers an unrivaled choice of integrations and value-added capabilities.

Connect to 100+ Marketplaces and Storefronts Worldwide

Integrate Sage seamlessly with more than 100 leading online marketplaces and storefronts, including Amazon, eBay, Walmart, Shopify, WooCommerce, and more. Automatically exchange order, fulfillment, customer, and inventory data across all platforms, eliminating the need for manual entry and ensuring accuracy. Whether you're managing sales through marketplaces like Amazon Seller Central and Vendor Central or popular web stores like Magento and BigCommerce, our solution streamlines your operations by synchronizing data in real-time. Enjoy faster order processing, automated customer creation, and consistent updates to pricing and inventory—enhancing visibility and efficiency across your entire eCommerce ecosystem.



TrueCommerce EDI Solutions: A Total EDI Solution for Sage 100 from One Reliable Source

Easy to Use

- As intuitive to use as email
- Point-and-click functionality
- Requires minimal training to get started
- Includes a step-by-step user's guide
- Backed by free support!

Connects to Any Trading Partner

- Including those requiring the use of AS2 or a specific Value Added Network (VAN)
- Over 180,000 trading partner mappings and growing

Robust Functionality

- Supports any X12, EDIFACT, XML and Tradacom transaction
- Seamless integration across sales orders, invoices, advance ship notices, outbound sales orders and inbound shipments reduces or eliminates manual data entry
- Optional purchasing integration automates purchase order, shipment and invoicing transactions with suppliers
- Available Scheduler add-on lets you automate common tasks such as sending, receiving, importing and exporting transactions as well as backing up data

Unbeatable Business Value

- No annual contract required or early termination fees
- No AS2 license fees, mailbox fees, peak hour surcharges, delimiter conversion fees or other hidden service fees
- Included Mapping Updates: If your trading partner changes a specification or adds a transaction, we'll update your data mapping at no charge
- Free unlimited support in your region
- Supports integration of key warehouse documents for 3PLs

System Requirements

- Microsoft Windows 11 Home, Pro, or Enterprise, Microsoft Windows 10 Home, Pro, or Enterprise, Microsoft Windows 8.1, Windows 8.1 Pro, Windows 8.1 Enterprise, Microsoft Windows 8, Windows 8 Pro, Windows 8 Enterprise, Microsoft Windows 2016 Server and newer
- Microsoft Edge (version 13 and greater), Mozilla Firefox (version 43 and greater), Google Chrome (version 48 and greater), Apple Safari (version 9 and greater; limited support policy)
- Broadband internet connection



Call us today at **888.430.4489** or visit www.truecommerce.com

Sales@TrueCommerce.com



©Copyright 2024 True Commerce, Inc. All rights reserved. Reproduction in whole or in part without permission is prohibited, and information contained herein is subject to change without notice. TrueCommerce® is a registered trademark of True Commerce, Inc. All other trademarks are property of their respective owners.

About TrueCommerce

TrueCommerce is a high-performing global supply chain network that provides fully integrated, end-to-end supply chain visibility and management. We help businesses reach their true supply chain potential. That's why thousands of companies—from SMBs to the global Fortune 100, across various industries—rely on us.