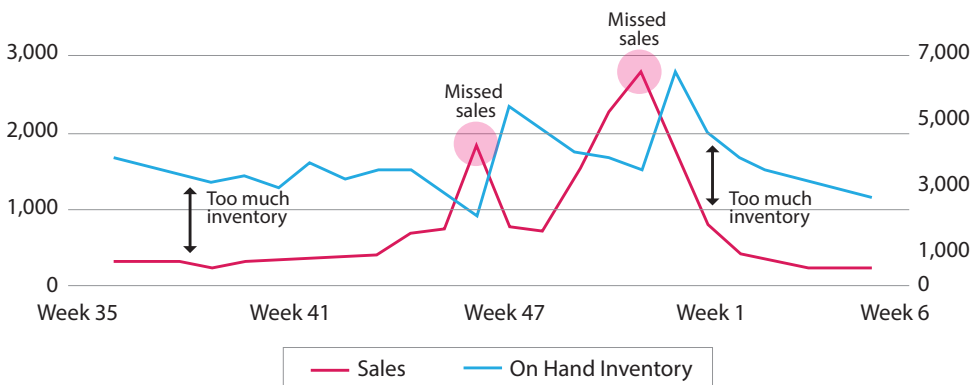


TrueCommerce ReplenishAI



ENHANCED FORECASTING AND REPLENISHMENT SOLUTION

In today's fast-paced supply chain environment, companies are struggling to identify seasonal demand trends and group items with similar sales patterns. Without accurate models, forecasts suffer, leading to poor inventory management and missed sales opportunities, as indicated by the chart below.



TrueCommerce ReplenishAI is a powerful, AI-driven solution designed to enhance forecasting accuracy and improve replenishment workflows, ensuring your business stays ahead. As part of TrueCommerce's comprehensive Datalliance Vendor Managed Inventory (VMI) solution, ReplenishAI integrates seamlessly to provide a holistic approach to managing inventory, optimizing stock levels, and driving supply chain efficiency.

With ReplenishAI we are able to create a forward-looking forecast for groups of items based on historical demand. This allows for better order point management going into and out of a seasonal sales cycle. The process includes:

- Exponentially smoothing demand average for each individual item
- Grouping the individual items based on similar demand
- Each groups forecast is adjusted weekly based on demand
- Accurate forecasts determine optimal order points and order quantities for each item

KEY BENEFITS



1. Seasonal Trend Awareness:

Stay ahead of seasonal demand fluctuations and sales trends. TrueCommerce ReplenishAI analyzes seasonal sales patterns, ensuring that your inventory is always aligned with peak demand periods. By forecasting these trends accurately, the solution helps you avoid missed sales opportunities and ensures stock availability during key sales periods like holidays and promotional events.



2. AI-Driven Forecasting:

Leverage artificial intelligence to generate precise demand forecasts based on historical data, trends, and market conditions. TrueCommerce ReplenishAI uses machine learning algorithms that continuously refine predictions to adapt to changing demands.



3. Real-Time Visibility and Control

Gain complete visibility into your supply chain with real-time insights into inventory levels, order status, and replenishment needs. TrueCommerce ReplenishAI empowers you to respond swiftly to fluctuating market conditions, minimizing stockouts and overstocks.



4. Optimized Replenishment:

Maximize replenishment efficiency by automatically generating purchase orders or production plans. The solution optimizes order quantities and timing to align with demand forecasts, helping you maintain optimal stock levels while reducing carrying costs.



5. Enhanced Collaboration Across the Supply Chain:

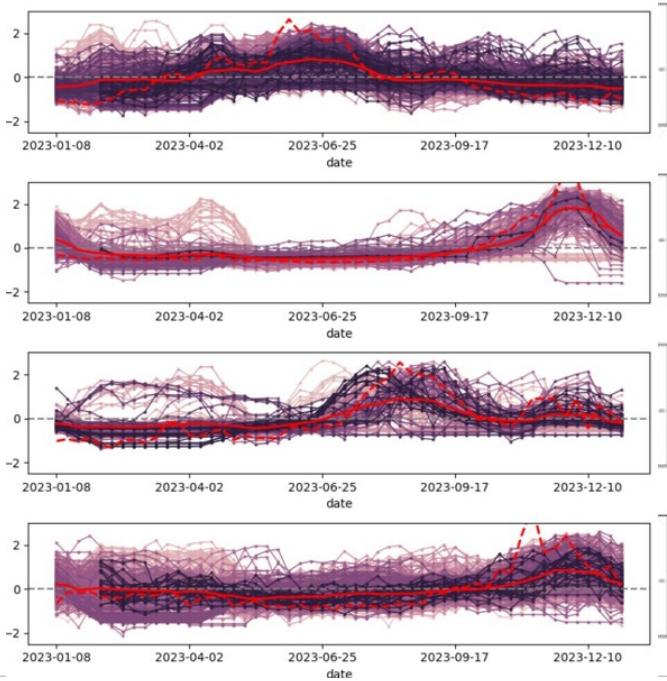
Promote stronger partnerships between suppliers, manufacturers, and retailers. TrueCommerce ReplenishAI fosters a collaborative approach to inventory management, providing shared insights and data that help all parties align on demand forecasts and replenishment strategies.



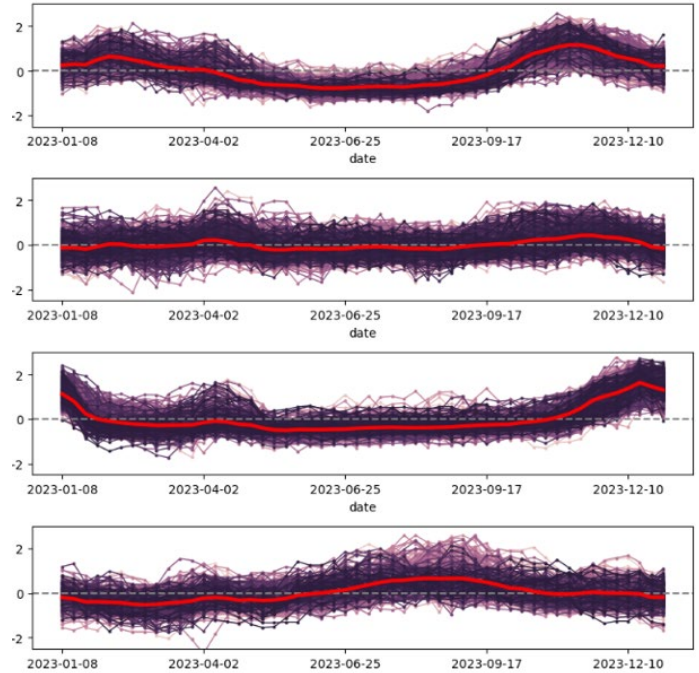
6. Improved Efficiency and Cost Savings:

With automated forecasting and replenishment processes, your team can focus on higher-value activities. TrueCommerce ReplenishAI reduces manual intervention, minimizes errors, and cuts excess inventory costs by optimizing stock levels.

MANUAL SALES PROFILE



AI SALES PROFILE



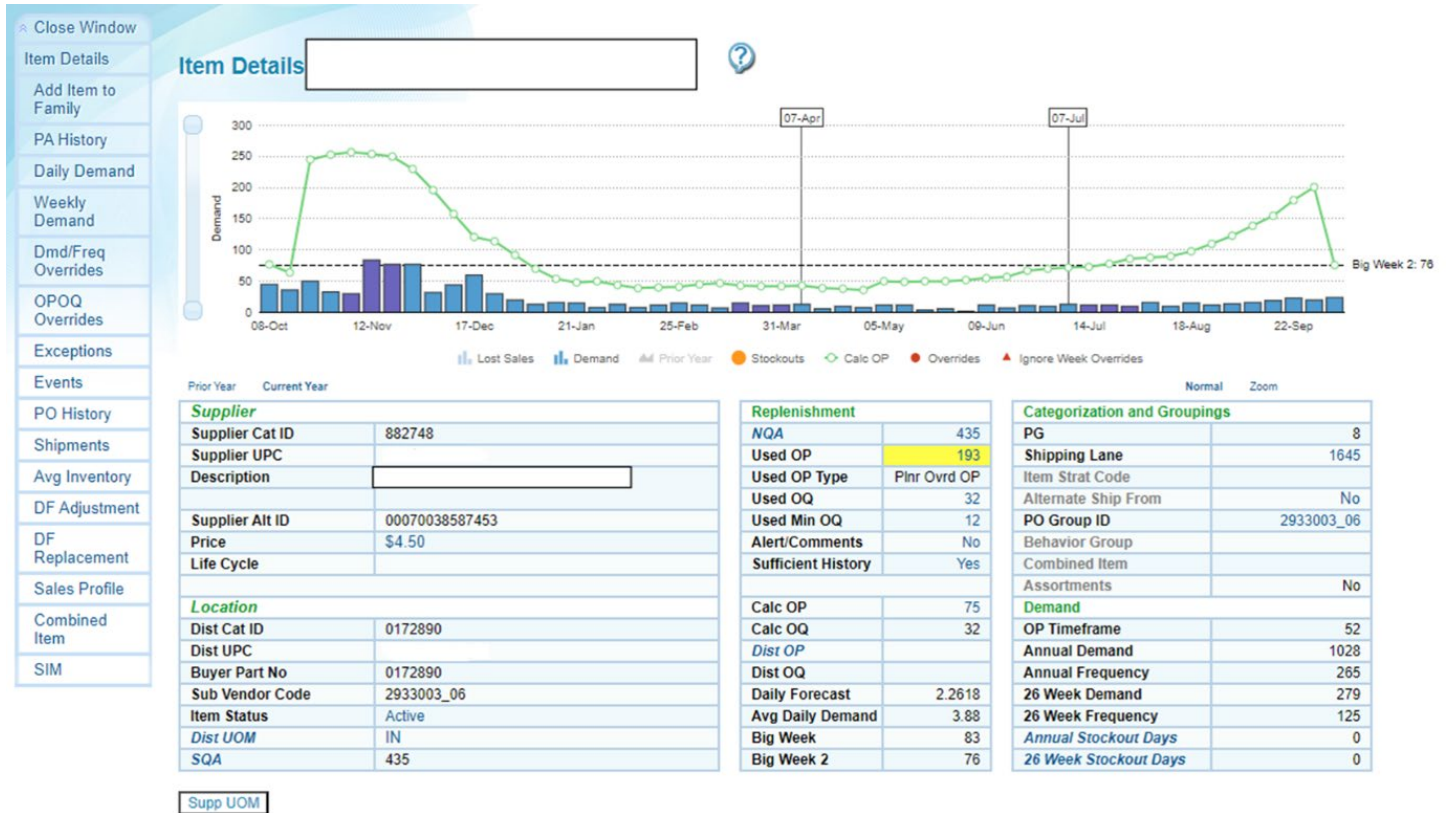
AI sales profiles offer 1) increased uniformity, 2) better identification of sub-trends, and 3) the ability to easily discover new types of profiles

WHY CHOOSE TRUECOMMERCE REPLENISHAI?

- **Advanced AI Capabilities:** TrueCommerce ReplenishAI utilizes state-of-the-art artificial intelligence technology to enhance forecasting accuracy and improve decision-making.
- **Seamless Integration:** ReplenishAI feeds into your TrueCommerce VMI application to easily update your forecasts and uses the advanced inventory management application to optimize replenishment. It gives you full control of additional planning variable such as safety stock limits, offset weeks, and the smoothing factor used in the forecasting model.
- **Actionable Insights:** Empower your team with real-time data and insights that drive smarter, faster decisions across the supply chain.
- **Scalability:** As your business grows, ReplenishAI scales with you, ensuring that your forecasting and replenishment processes remain efficient and effective.

Interested in
learning more
about our full
VMI solution?

Visit Our Site



The screenshot above shows the TrueCommerce VMI Details page, depicting weekly sales data that is fed into the ReplenishAI model.

Discover how TrueCommerce ReplenishAI can help your business enhance forecasting accuracy and streamline replenishment giving you a level of control and visibility in the industry. Visit [truecommerce.com](https://www.truecommerce.com) or contact us to [schedule a demo today!](#)



Call us today at **888.430.4489** or visit www.truecommerce.com

Sales@TrueCommerce.com



©Copyright 2024 True Commerce, Inc. All rights reserved. Reproduction in whole or in part without permission is prohibited, and information contained herein is subject to change without notice. TrueCommerce® is a registered trademark of True Commerce, Inc. All other trademarks are property of their respective owners.

About TrueCommerce

TrueCommerce is a high-performing global supply chain network that provides fully integrated, end-to-end supply chain visibility and management. We help businesses reach their true supply chain potential. That's why thousands of companies—from SMBs to the global Fortune 100, across various industries—rely on us.